

Siebel Integration

CONNECT YOUR ON-PREMISE CRM
WITH THE CLOUD

SIEBEL INTEGRATION SIMPLIFIED

Siebel defined Customer Relationship Management with thousands of companies using Siebel to automate their service and sales organizations across verticals, including communications, insurance, life sciences, manufacturing, retail and the public sector. In today's digital world, it's critical that businesses connect Siebel with their other apps and sources of data that may live on mobile, cloud, and on-premise systems.

The Jitterbit Siebel Connector brings unprecedented agility to the Siebel platform, helping organizations take full advantage of Siebel's complex configuration and forecasting capabilities, as well as vertical-specific tools, by connecting Siebel with other enterprise applications.

The Jitterbit Siebel Connector provides the market's only fully bi-directional real-time integration solution for Siebel CRM. Jitterbit's intuitive "clicks not code" user interface offers business users the fastest way to connect Siebel implementations to thousands of endpoints. By connecting to digital cloud services including eSignature, CPQ, social marketing, or analytics, Siebel users can immediately amplify the value of their existing implementations.

SIEBEL CONNECTOR FEATURES

- ✓ Connect any cloud or on-premise app to Siebel
- ✓ Synchronize Siebel with SAP, Oracle, NetSuite and other back office systems
- ✓ Automate sales and service processes across the front and back office
- ✓ Expose Siebel securely through an API to enable real-time connectivity
- ✓ Access the complete Siebel data model, including all standard and custom data objects
- ✓ Connect to cloud services including CRM, eSignature, CPQ, social marketing, and analytics
- ✓ Create flexible hybrid CRM deployments and faster CRM migrations

Jitterbit, Inc.

1301 MARINA VILLAGE PARKWAY, SUITE 201, ALAMEDA, CA 94501
1.877.852.3500 | INFO@JITTERBIT.COM



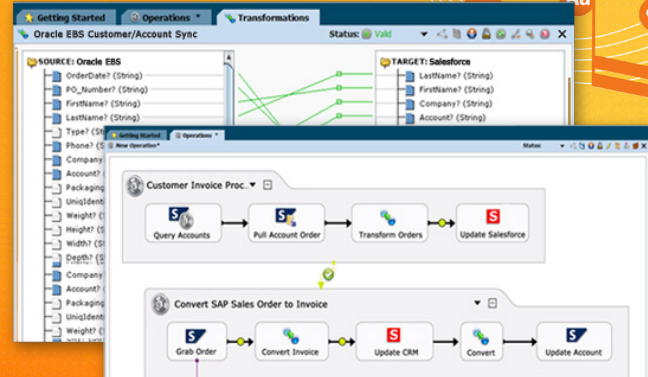
BENEFITS OF CONNECTIVITY

- ✓ Gain real-time visibility into all aspects of the business
- ✓ Save time and empower employees to focus on their core jobs
- ✓ Ensure that data is accurate and synchronized everywhere
- ✓ Automate processes and streamline business operations
- ✓ Enable real-time customer self-service
- ✓ Customize sales and marketing offers for customers
- ✓ Realize return on investment quickly, with low total cost of ownership

TRY JITTERBIT TODAY!

Get started with a
30-day free trial at
www.jitterbit.com/try

Get Your Apps In Harmony



Jitterbit Harmony provides a graphical, code-free approach to simplify integration between data, apps, and devices.

Design, deploy, and manage connections between apps without custom code.



DESIGN YOUR INTEGRATION

- Connect any data, app, or device
- Intelligently map data fields
- Build powerful workflows
- Automate business processes to streamline operations
- Get started fast with “Jitterpak” templates



DEPLOY ANYWHERE

- Run cloud, on-premise, or hybrid
- Create secure local connections with lightweight agents
- Scale elastically to meet needs in real time
- Count on high availability with smart agent groups



MANAGE FROM ANY DEVICE

- Manage from the Harmony Cloud
- Provide secure access with user-based permissions
- Get real-time alerts and complete audit trail
- Optimize intelligently across unlimited environments

Harmony users deploy their first integration in a matter of days!

GET STARTED TODAY

www.jitterbit.com/try

SEE SUBSCRIPTION PRICING

www.jitterbit.com/pricing

Standards-Based Connectivity

- HTTP/S
- Web Services (SOAP, REST)
- ODBC
- JDBC
- FTP
- File Shares
- LDAP
- SMTP/POP3

Data Formats

- XML—(WSDL, XSD)
- All EDI (EDIFACT, HL7, etc)
- Flat Text Structures
- Hierarchical Text Structures

Platforms

Cloud, Windows, Mac, Linux

Enterprise Applications

- Salesforce
- NetSuite
- SAP
- Microsoft Dynamics
- Siebel
- PeopleSoft
- Oracle EBS
- JD Edwards
- Workday
- Marketo
- and more...

Databases

- Oracle
- SQL Server
- DB2
- MySQL
- Sybase
- Teradata
- and more...

Files

- Web Services
- XML
- Flat and Hierarchic Structures
- Legacy
- Active Directory
- LDAP
- and more...